



PLUMERIA

GROVE

JANABIYAH | BAHRAIN

HOMES FOR LIFE SINCE 2011

For over 14 years, we've been redefining living standards in Bahrain. From the first conversation to the finishing touches, we work closely with clients to craft homes that feels just right - places where space, light, and form come together to create a sense of calm and connection.

Plumeria Grove is a curated collection of 12 independent villas, thoughtfully designed for modern living with privacy, space, and elegance in mind. Available in 4- and 5-bedroom layouts, each home features expansive windows, clean architectural lines, and premium finishes including parquet flooring, Italian porcelain, and sintered stone—offering a refined yet comfortable living experience.

A Plumeria home isn't defined by its walls, but by the warmth it carries
— the quiet comfort of belonging, the ease of being yourself.

EXTERNAL VIEW



CORNER PLOT VIEW



POOL AREA



LOCATION

Nestled in the heart of Janabiyah, one of Bahrain's most desirable neighborhoods, Plumeria Grove offers an unmatched lifestyle in a prime location.

JANABIYAH | BAHRAIN

AMENITIES

Enjoy close proximity to Bahrain's top shopping hubs like Liwan and Janabiya Park, as well as leading international schools such as St. Christopher's and the British School of Bahrain.

Just 4 km from the Saudi Causeway, it's the ideal choice for commuters or those with a secondary residence in Saudi Arabia.



SPECIFICATION

Every detail of Plumeria Grove has been carefully considered, with materials and spaces thoughtfully balanced—designed for those who value harmony, beauty, and refined living.

SPECIFICATION

PROPERTY SIZE

Set on 315 sqm plots with 525 sqm built-up area, these villas combine modern elegance with spacious design.



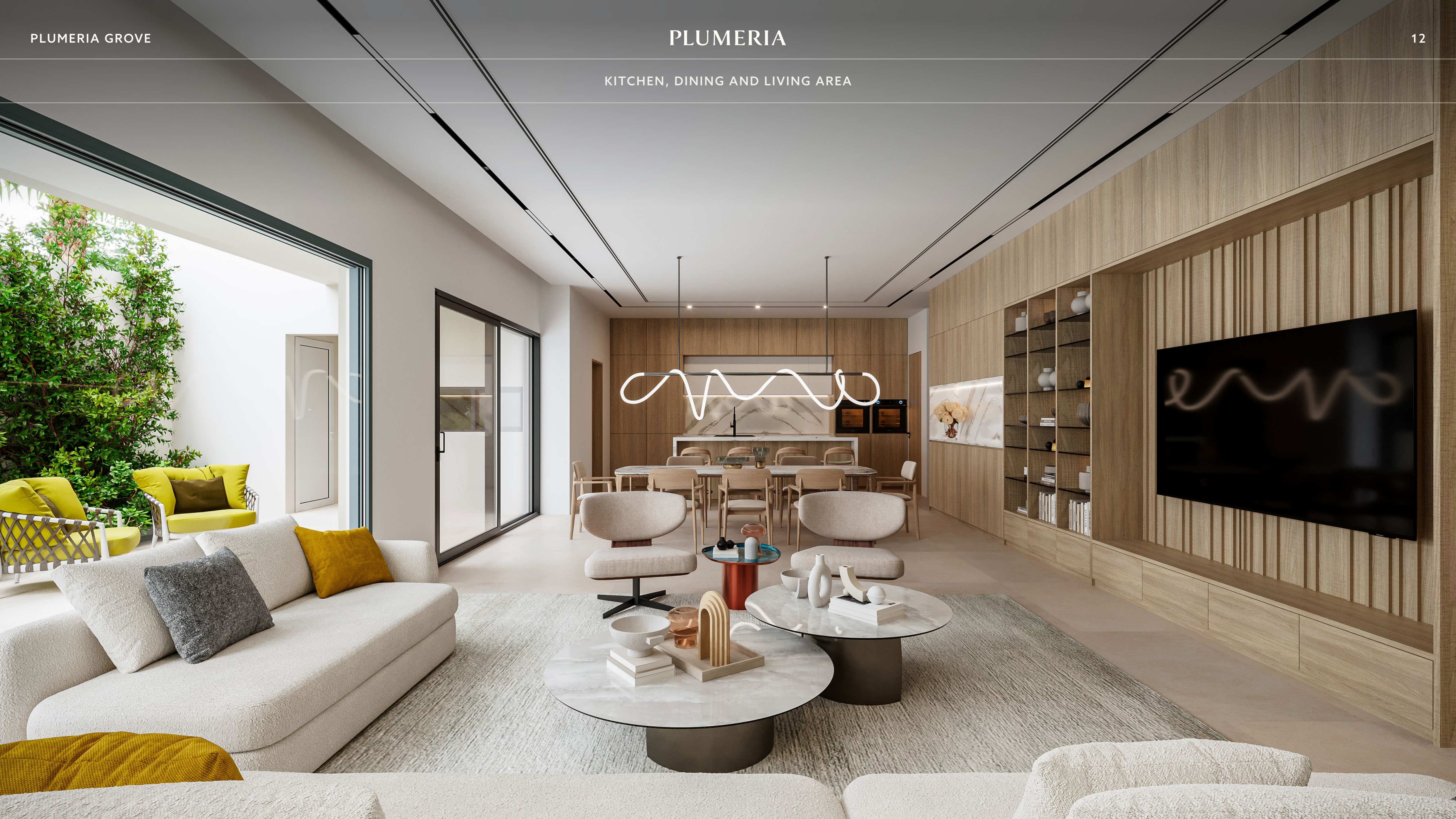
SPECIFICATION

MATERIALS AND FINISHES

The highest global benchmarks in finishing ensure that every detail exudes sophistication, from laminate hardwoods and sintered stone to exquisite italian porcelin.



KITCHEN, DINING AND LIVING AREA



LIVING ROOM AND DINING



HOME OFFICE/GUEST BEDROOM



KITCHEN AND DINING



MASTER BEDROOM



MASTER WARDROBE

DESIGN A WARDROBE THAT FITS YOUR LIFE.

Crafted to your exact needs, our bespoke wardrobes stand 2.7 meters tall and feature premium air hinges for smooth, silent closing. Built for beauty, tailored for function — completely yours.



MASTER BATHROOM

At Plumeria, we integrate biophilic, introspective design throughout—like this master bathroom, where a private garden brings nature, light, and calm within.



KING BEDROOM



QUEEN BEDROOM



SKY LOUNGE

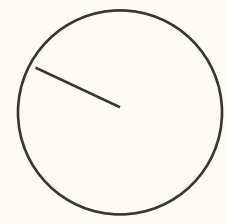


PLANS

Every detail of Plumeria Springs has been carefully considered, with materials and spaces thoughtfully balanced—designed for those who value harmony, beauty, and refined living.

PLANS

GROUND FLOOR



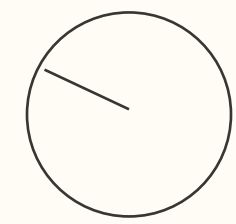
BUILT-UP
231 M²

INSIDE	AREA
FOYER	10.5 m ²
LIVING ROOM	27.8 m ²
GUEST TOILET	3.8 m ²
DINING ROOM	18.9 m ²
OPEN KITCHEN	19.5 m ²
SERVICE KITCHEN	8.5 m ²
PANTRY	5.0 m ²
MULTIPURPOSE ROOM	20.8 m ²
MULTIPURPOSE BATHROOM	4.0 m ²
OUTSIDE	
SWIMMING POOL	12.4 m ²
POOL BATHROOM	3.8 m ²
PUMP ROOM	2.4 m ²
GARAGE	39.8 m ²
GARDEN	86.5 m ²



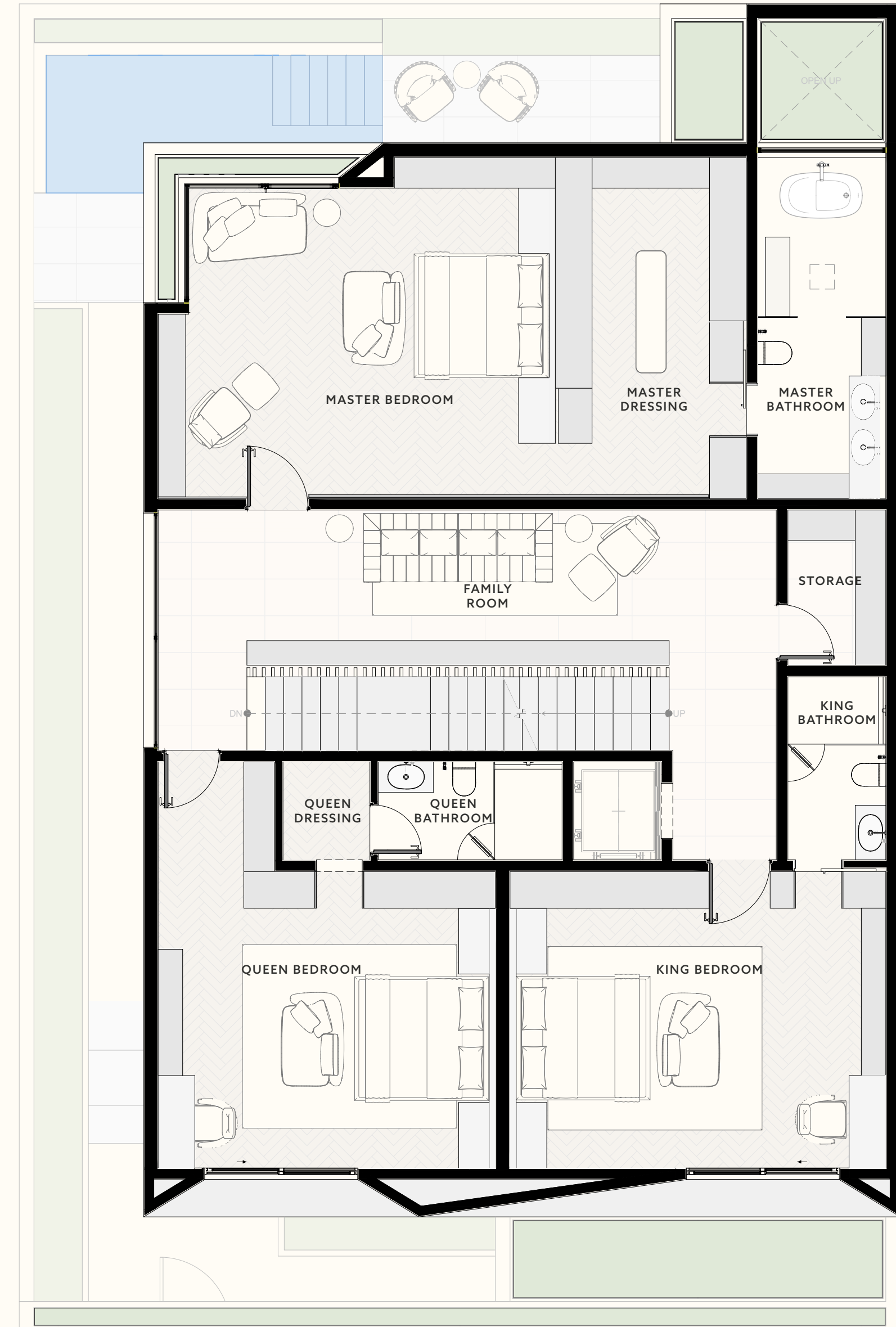
PLANS

FIRST FLOOR



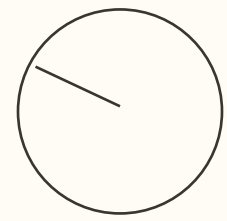
BUILT-UP
216 M²

INSIDE	AREA
FAMILY ROOM	27.5 m ²
STORAGE	4.1 m ²
QUEEN BEDROOM	30.1 m ²
QUEEN DRESSING	2.3 m ²
QUEEN BATHROOM	4.8 m ²
KING BEDROOM	29.7 m ²
KING BATHROOM	4.8 m ²
MASTER BEDROOM	33.2 m ²
MASTER DRESSING	17.4 m ²
MASTER BATHROOM	11.6 m ²



PLANS

SECOND FLOOR



BUILT-UP
110 M²

INSIDE	AREA
SKY LOUNGE	24.2 m ²
BATHROOM	5.2 m ²
LAUNDRY ROOM	15.0 m ²
MAID'S ROOM	20.2 m ²
MAID'S BATHROOM	4.2 m ²
CORRIDOR	18.6 m ²
OUTSIDE	
SKY TERRACE	46.4 m ²



BOOK AN APPOINTMENT

Please get in touch to arrange a viewing at your convenience. We'd be happy to walk you through the space, explore the design and material options, and share the thinking behind the layouts.

ALAA AL HUSSAINI

SALES EXECUTIVE

+973 387 00 111 | ALAA@PLUMERIA.CO | [PLUMERIA.BH](https://plumeria.bh)