



FOUR SEASONS

PRIVATE RESIDENCES

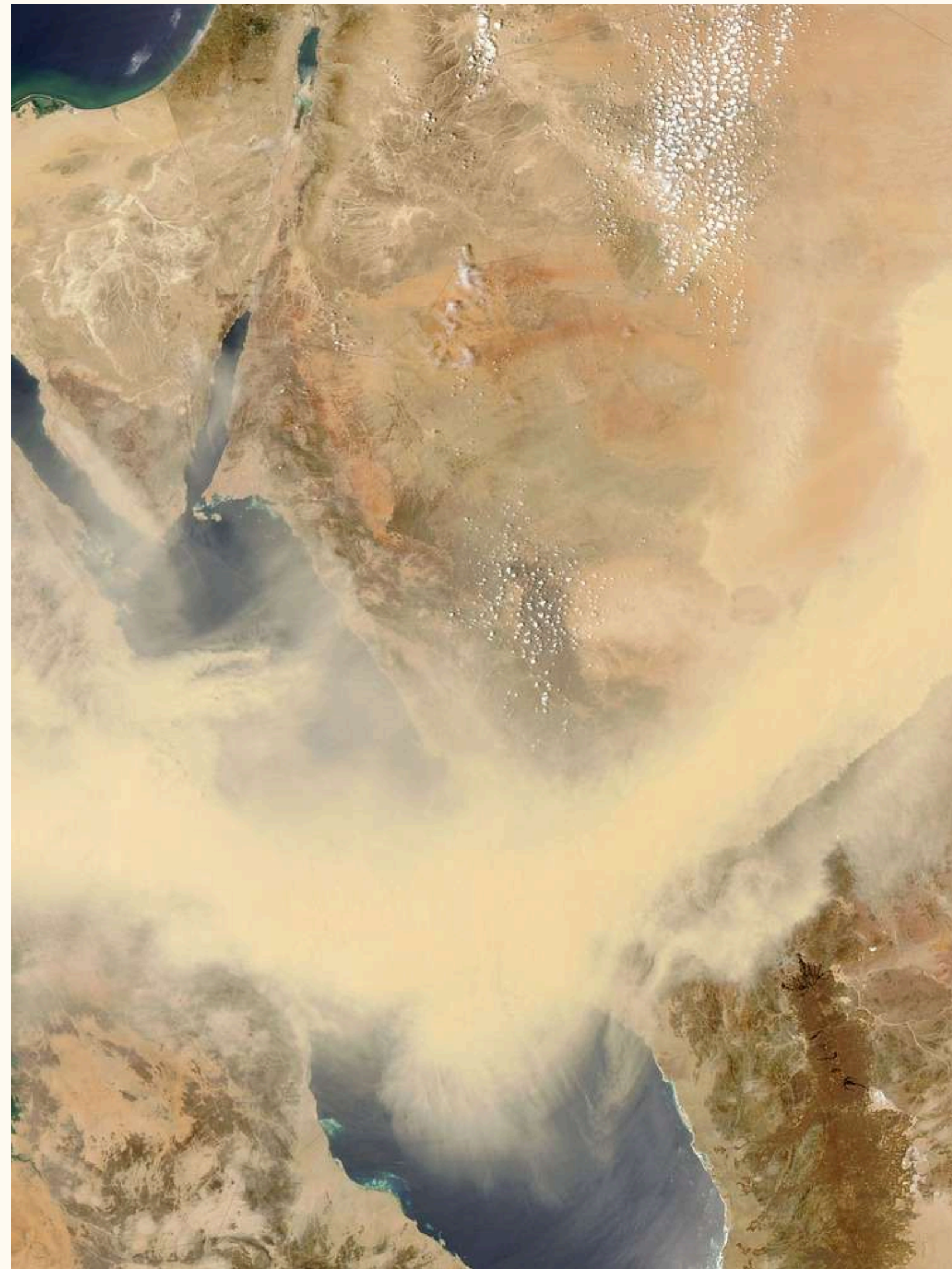
JEDDAH AT THE CORNICHE

مساكن خاصة - فندق فورسيزونز كورنيش جدة

MIDAD

Crafting
Landmarks
that Define
Generations

A LANDMARK STORY



Rising along the Red Sea this is a place shaped by intention where architecture culture and lifestyle come together to form something lasting and meaningful.





On this ancient shoreline

Where wind water and light have shaped centuries.
A new chapter quietly rises.
Created for those who understand that true luxury.

Is not loud,
It is felt.

A NEW STORY ON THE RED SEA





THE MINDSET BEHIND THE *ADDRESS*

Founded on care shaped by purpose



Isadore Sharp

Isadore Sharp is the founder of Four Seasons whose belief that true luxury begins with care respect and attention to detail continues to shape every Four Seasons experience around the world.

A place where the Red Sea whispers its endless horizon into every day welcomes a life composed with intention and meaning welcome to A Landmark Story a landmark shaped by calm by beauty and by permanence guided by the belief of Isadore Sharp who founded Four Seasons on a simple principle that true luxury lives in care respect and the way people are treated a philosophy that continues to shape every Four Seasons experience including this one in Jeddah.



THE ART OF
GENUINE CARE

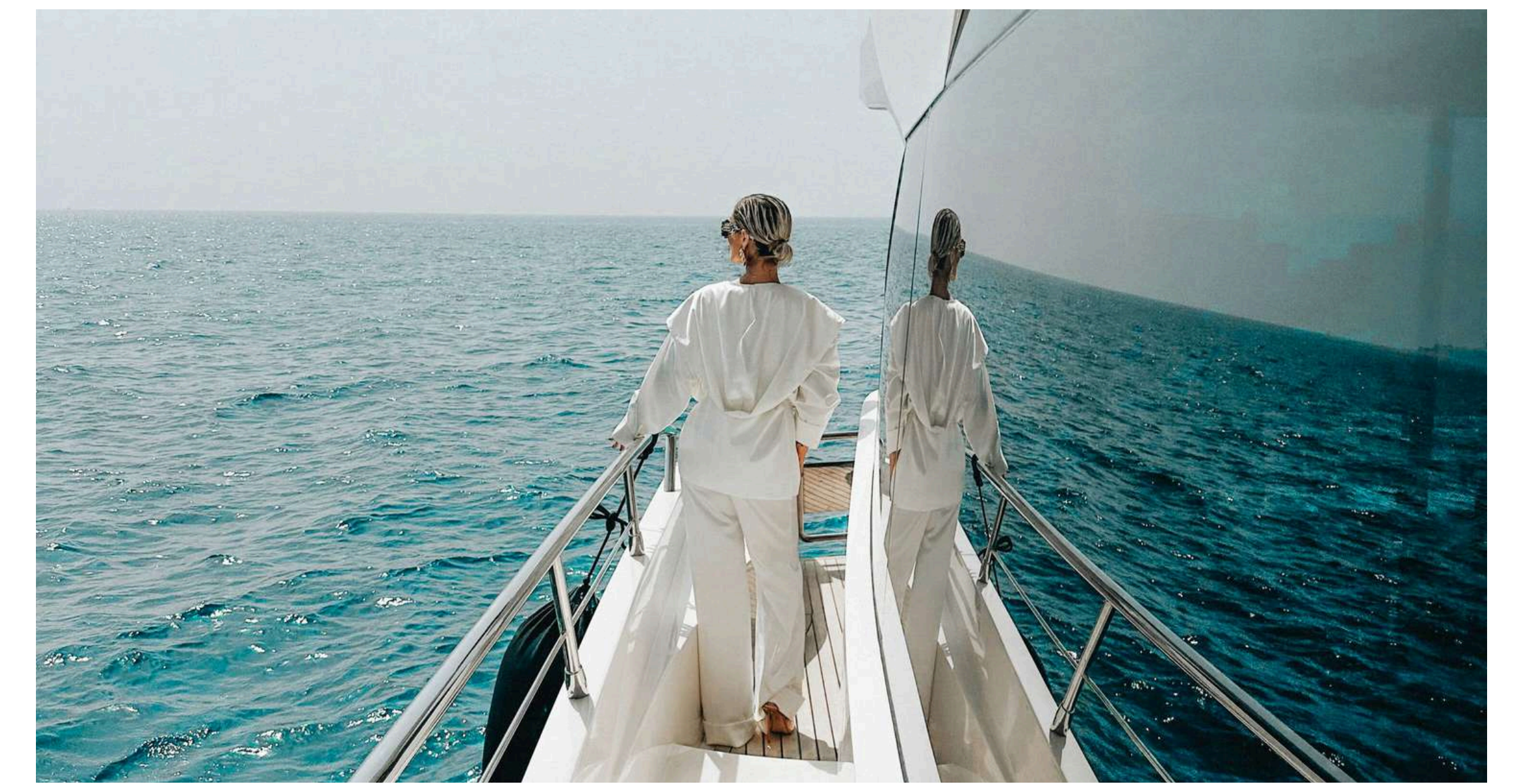
*The essence of Four Seasons comes
from a timeless truth:*

**“TREAT PEOPLE
THE WAY YOU
WOULD LIKE TO
BE TREATED.”**



A GATEWAY TO THE *NEW JEDDAH*

Where a city's future finds its address



Jeddah is entering a new era shaped by confidence, ambition, and a renewed global presence—a city long defined by openness now redefining what it means to belong to the future at the edge of the Red Sea. A new chapter quietly takes form, one that does not follow transformation but leads it where culture, commerce, and lifestyle align, and where the rhythm of the city meets a more intentional way of living. This gateway is not only an address but a moment in Jeddah's story where progress feels natural, vision feels grounded, and the future feels unmistakably at home.

JEDDAH



A CITY THAT
HAS ALWAYS
WELCOMED
THE WORLD

Before it was a destination

For centuries Jeddah has been a city of passage welcoming cultures ideas and stories from across the world.

Here heritage is not preserved in the past but carried forward creating a city that balances depth authenticity and a distinctly modern rhythm.





WHERE HERITAGE *MEETS TOMORROW*

Before it was a destination

Rich with culture, warmth, and timeless hospitality.

A city that holds its heritage dearly,
yet opens its arms to the world.



- Jeddah Yacht Club & Marina 20 min
- Formula 1 Saudi Arabian Grand Prix 18 min
- Airport Train Station 27 min
- King Abdulaziz International Airport 27 min
- Red Sea Mall 9 min

Jeddah Waterfront 8 min

King's College Hospital London 6 min

FOUR SEASONS PRIVATE RESIDENCES JEDDAH

Jeddah Central 9 min

PROJECT LOCATION

At the edge of the city

Located along Jeddah's Corniche the project overlooks the Red Sea while remaining closely connected to the city offering a rare balance between openness privacy and everyday accessibility.

WELCOME
TO
A NEW
HORIZON





FOUR SEASONS

PRIVATE RESIDENCES

JEDDAH AT THE CORNICHE

مساكن خاصة - فندق فورسيزونز كورنيش جدة

A MIDAD REAL ESTATE DEVELOPMENT

THE ICON

Rising along the Red Sea, the form asserts itself with undeniable authority. Its clarity speaks louder than any ornament. Every line, every proportion conveys confidence. From every angle, the building embodies a single, deliberate gesture, a silhouette of purpose, balance, and unmistakable presence. Height is surpassed by the power of being.

WHERE *ARCHITECTURE* MEETS THE *HORIZON*

Here, architecture becomes emotion

Geometry meets landscape in perfect dialogue. Sharp edges soften against the vastness of the sea. Solid mass merges with infinite horizon. Each elevation is intentional.

A sculptural expression of harmony

Light dances across every surface, shifting the façade as the day unfolds. A landmark that anchors the Corniche, elevates the city, and commands attention from near and far.





FOUR SEASONS



ARCHITECTURE *THAT HOLDS* MEANING

*Architecture here is not designed to impress
at first glance*

Rising along the Red Sea, the structure reveals itself slowly, through light, proportion, and the deliberate dialogue between solid form and open horizon. This is architecture with restraint, where confidence replaces excess, and every line carries intention.

Four interconnected towers encircle a terraced inner garden, creating a sense of inward calm while opening outward to the sea. It is a composition of balance: urban presence softened by nature, scale refined through detail.

A LANDMARK
SHAPED BY
PURPOSE

*The artistry lies not in
ornament, but in orchestration.*

This is architecture that understands its
responsibility.

To the city.

To the residents.

To generations yet to come.

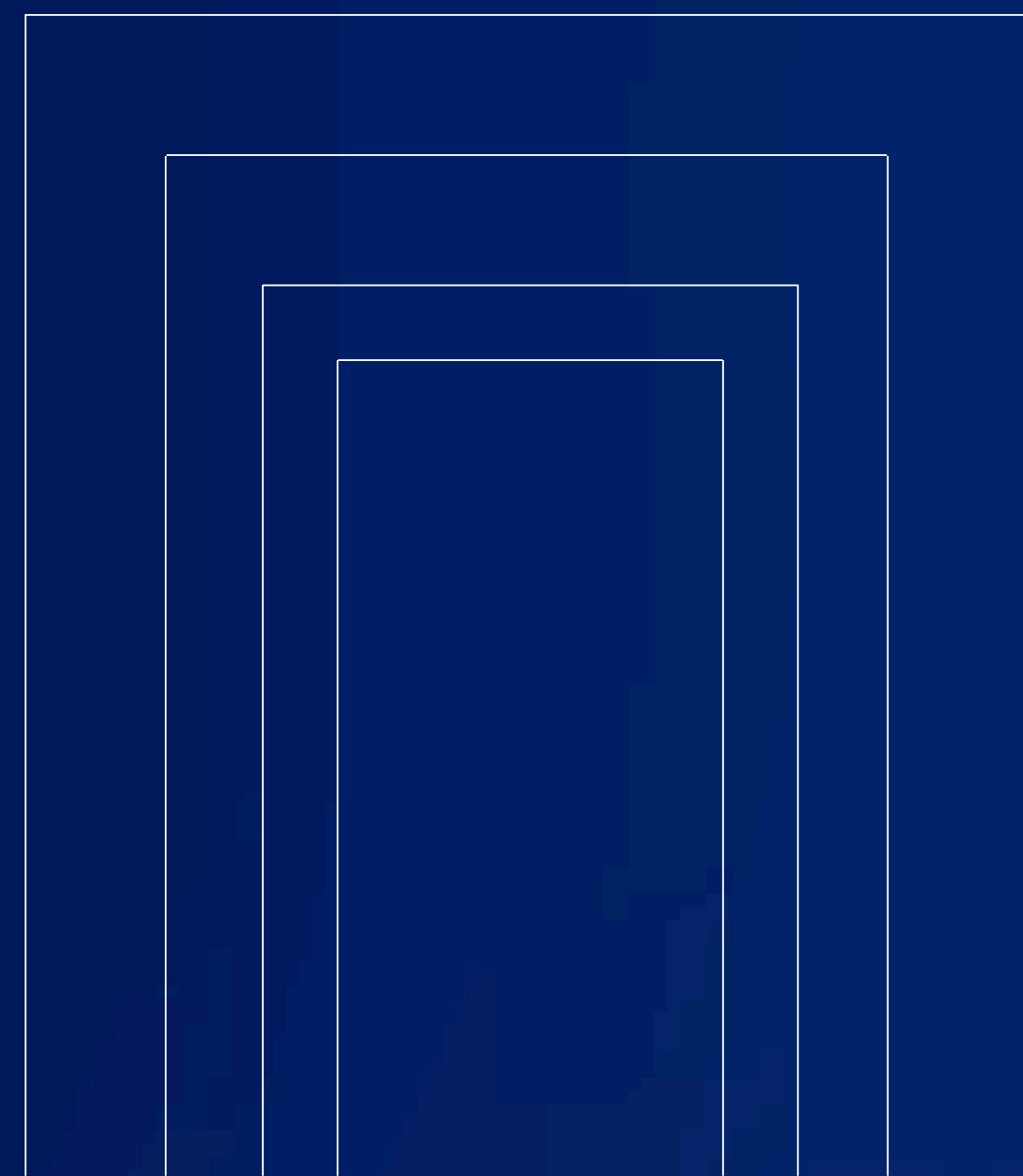




A WAY OF LIVING

Built to Belong

Life at Four Seasons is centered on people, not places. It unfolds with ease, guided by care, familiarity, and a quiet understanding of what makes daily living feel effortless. Here, belonging is immediate — felt, not explained.





Made to Endure

What defines life with Four Seasons is continuity. Care that does not change, service that remains familiar, and a way of living built on trust over time. The experience grows stronger through consistency, where reliability becomes comfort, and comfort becomes permanence.

A QUIET
TRANSITION
FROM THE
WORLD
OUTSIDE
TO THE
SANCTUARY
WITHIN

THE ARRIVAL

A Quiet Sense of Welcome

Arrival is composed, calm, and deliberate. Cascading water, softened light, and controlled movement transition residents from the city into a private world of ease and assurance.





A WELCOME
CRAFTED
UNIQUELY
FOR YOU

RESIDENTIAL LOBBIES

Refined by Design

Double-height spaces, curated materials, and subtle detailing create an atmosphere of understated elegance.

The lobby is not a passage, it is a statement of arrival and belonging.





Life unfolds with quiet precision. Daily routines are supported by intuitive service, thoughtful design, and a setting that adapts to the rhythm of its residents.

THE FOUR SEASONS LIFE

EVERYDAY
ELEVATED

*Nothing Asked.
Everything Known.*

Preferences are anticipated, not requested. This is living shaped by care, consistency, and a culture that understands long-term ownership.





GENUINE CARE CREATES LASTING VALUE.

This philosophy defines every interaction, every space, and every decision.

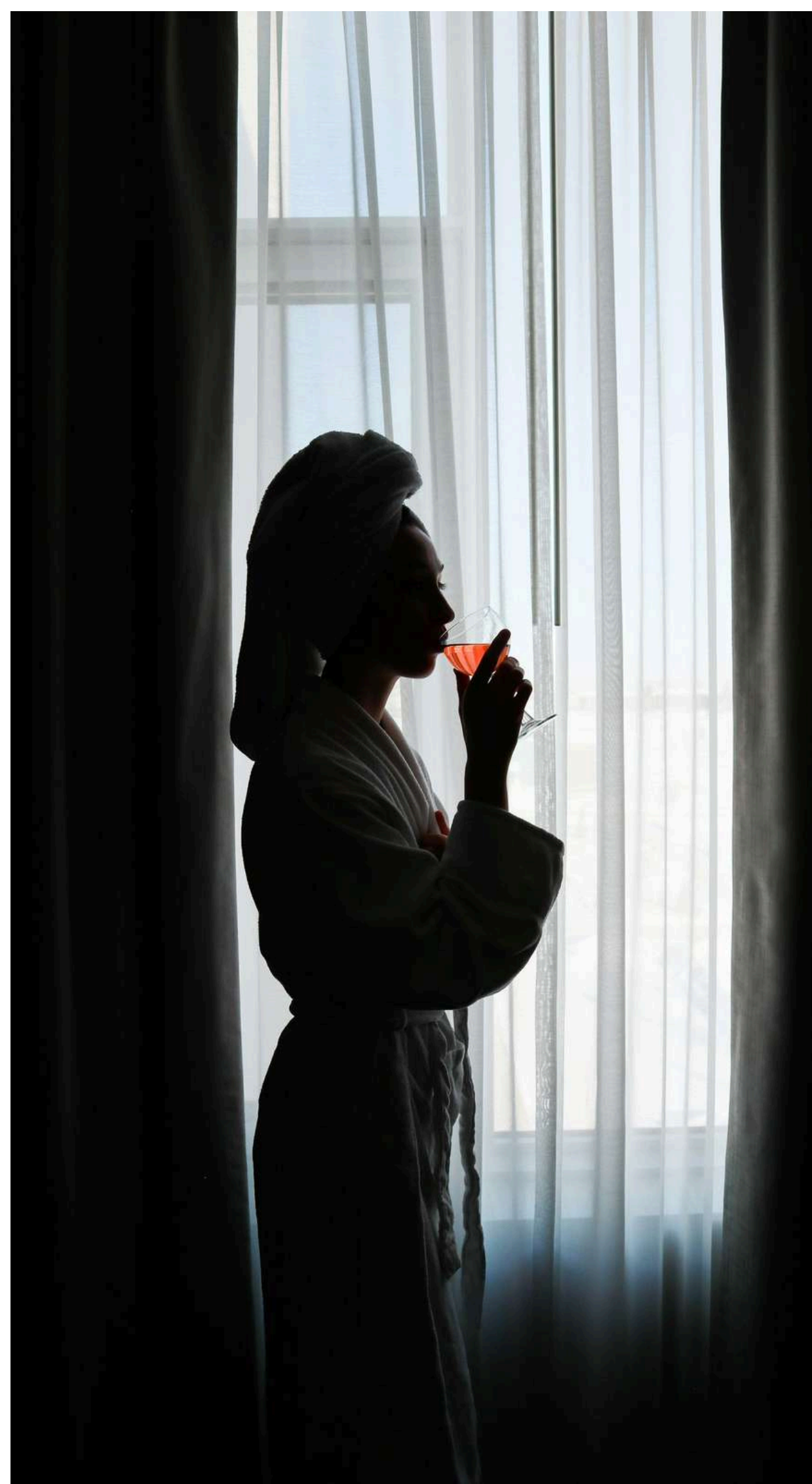


THE GOLDEN RULE

Human at Its Core



Service here is not a feature, it is a culture. One that places people first and treats ownership as a long-term relationship.



EACH
ENVIRONMENT
INVITES YOU
TO SLOW
DOWN.

To reconnect.

To simply be.



RESIDENCES AMENITIES

RESIDENTS' POOL

| | |
|-------------|---|
| INDOOR POOL | Temperature-controlled High-privacy, owners-only Spa-like environment with refined finishes |
| RELAXATION | Quiet seating areas Soft lighting & wellness ambience |

FITNESS & WELLNESS

| | |
|-----------------|--|
| FITNESS CENTERS | Men's & women's gyms Premium strength & cardio equipment Stretching & functional zones |
| WELLNESS SUITES | Private treatment rooms Relaxation lounges Four Seasons-standard wellness services |

RESIDENTS' CLUB

| | |
|------------------------|---|
| LOUNGE & SOCIAL AREAS | Exclusive residents' lounge Elegant seating & sea-view ambience |
| MEETING & ENTERTAINING | Private meeting rooms Entertaining kitchen Outdoor terrace with Red Sea views |

SERVICES & SUPPORT

| | |
|---------------------------|---|
| 24/7 RESIDENTIAL SERVICES | Concierge Security Property management |
| MOBILITY & ACCESS | Valet parking Dedicated residential lobbies Controlled-access elevators |

PARKING & ENTRY

| | |
|-----------------------|--|
| RESIDENT-ONLY PARKING | Secured indoor parking Direct tower access |
| VALET & VEHICLE CARE | Full valet service VIP vehicle handling |

IN-HOME FEATURES

| | |
|----------------------------|---|
| KITCHENS & APPLIANCES | Designer kitchens Premium integrated appliances Show kitchen + service kitchen (in larger units) |
| INTERIOR DESIGN & FINISHES | Stone bathrooms Spa-inspired suites High-grade wood & metal details |
| VIEWS & LIGHT | Floor-to-ceiling glazing Private balconies overlooking the Red Sea |



HOTEL AMENITIES

WELLNESS & SPA

| | |
|---------------------|---|
| THERMAL EXPERIENCES | Hammam Sauna Steam Rooms Snow Room Experience Showers |
| TREATMENT SUITES | Massage Beauty Body care Signature wellness rituals |
| RELAXATION AREAS | Indoor pools Quiet lounges Wellness terraces |

DINING & CULINARY

| | |
|----------------|--|
| RESTAURANTS | All-Day Dining Signature Fine Dining Coastal-inspired culinary experiences |
| LOUNGES | Lobby lounge Cocktail bar Terrace lounge |
| PRIVATE DINING | Exclusive private dining rooms for residents & guests |

POOLS & OUTDOOR LIVING

| | |
|--------------------|---|
| OUTDOOR POOLS | Resort-style family pool Adult quiet pool Sun terraces |
| GARDENS & TERRACES | Landscaped gardens Hanging gardens Shaded outdoor lounges |
| LEISURE SPACES | Cabanas Relaxation decks Sea-view seating areas |

FAMILY & CHILDREN

| | |
|--------------|--|
| KIDS CLUB | Supervised activity rooms Creative learning spaces |
| FAMILY AREAS | Family pool zones Indoor & outdoor play areas |

EVENTS & BUSINESS

| | |
|---------------------|--|
| BUSINESS FACILITIES | Boardrooms Multi-purpose meeting rooms |
| EVENT VENUES | Grand ballroom Banquet halls Wedding & celebration venues |
| SUPPORT SERVICES | Catering AV support Event coordination by Four Seasons specialists |











MADE TO ENDURE

Refined from Within

Residents enjoy privileged access to Four Seasons hotel amenities while main Interiors are composed with timeless materials, calm palettes, and thoughtful proportions. Every space feels considered, balanced, and enduring, maintaining complete residential privacy. Hospitality is close — never intrusive.





DESIGNED FOR LIVING

Nothing Excessive

Layouts prioritize comfort and flow, supporting daily life as naturally as formal entertaining.





The image shows a luxurious bathroom with a large window overlooking the ocean. On the left, a white bathtub is partially visible, with a small table holding pink flowers and a candle. The right side features a vanity with two white sinks, a large mirror, and a dark wood cabinet with a towel hanging on the side. The walls and floor are made of marble.

PRIVATE SANCTUARIES

Your Personal Retreat

Bedrooms and private suites are designed as places of rest and renewal, sheltered from the outside world.



QUIET BY DESIGN

Calm Comes Naturally

Acoustic control, layered lighting, and generous space create a deeply personal sense of calm.

AREAS

1 Bed

167 SQM | 1,798 SQFT

2 Bed

249 SQM | 2,680 SQFT

3 Bed

313 SQM | 3,369 SQFT

4 Bed

391 SQM | 4,209 SQFT

5 Bed

558 SQM | 6,006 SQFT

2 Bed Duplex

308 SQM | 3,315 SQFT

3 Bed Duplex

328 SQM | 3,531 SQFT

6 Bed Penthouse

1,135 SQM | 12,217 SQFT





THE PENTHOUSE COLLECTION

Above All Else

Penthouses offer expansive layouts, heightened privacy, and commanding views, the most elevated expression of residence living.





A RARE OFFERING



Reserved by Design

Designed for those who value scale,
privacy, and distinction above all.





A World Within Reach

Residents enjoy privileged access to Four Seasons hotel amenities while maintaining complete residential privacy. Hospitality is close — never intrusive.

HOTEL- ADJACENT PRIVILEGE





ABC
WORLD



Connected, Not Crowded

Dining, wellness, and services are moments away, enhancing daily life without compromising discretion or calm.

THE BEST
OF BOTH
WORLDS





LIVING & DINING

Made to Gather

Living spaces are generous yet intimate, designed for connection, conversation, and everyday elegance.





ENTERTAINING WITH EASE

Effortless Hosting

Show kitchens, service kitchens, and seamless circulation support hosting of any scale.





OUTDOOR LIVING

Life in the Open

Gardens, walkways, and open-air spaces invite movement, pause, and reflection.

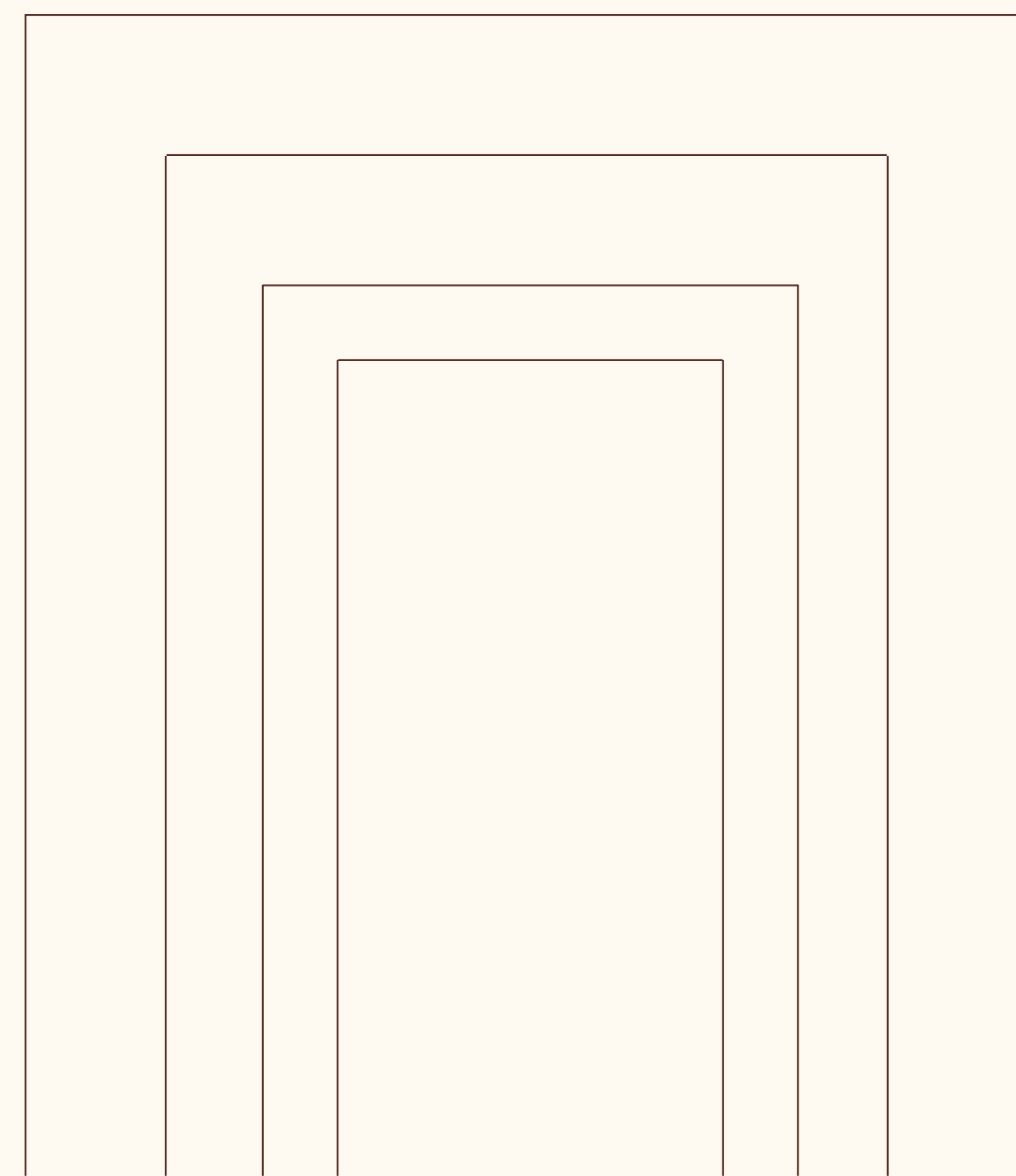




A LASTING ADDRESS

Defined for Generations

More than a residence, this is an address shaped by meaning, quality, and permanence.



MIDAD

Midad transforms vision into landmarks. Every project is conceived as a destination, where design meets purpose, and heritage meets modern living.

With decades of expertise and a track record of iconic developments, MIDAD delivers spaces that endure, inspire, and elevate lifestyles for generations to come.

Their collaboration with Four Seasons embodies this commitment: crafting residences that are not only homes, but enduring legacies.

For more information visit our website at midad.com.sa or via our social media platforms

+966 9200 099 44
info@midad.com.sa

RIYADH OFFICE

Bahrain Tower, King Fahd Rd, Al Olaya
Riyadh 12214, Saudi Arabia

JEDDAH OFFICE

Four Seasons, Sari Rd, Ash Shati
Jeddah 23413, Saudi Arabia

Four Seasons Private Residences Jeddah at the Corniche are not owned, developed or sold by Four Seasons Hotels Limited or its affiliates (Four Seasons). The developer, Midad Real Estate Investment Co., uses the Four Seasons trademarks and tradenames under a license from Four Seasons Hotels and Resorts B.V. Midad Real Estate Investment Co. is the real estate agent responsible for the marketing and sales of Four Seasons Private Residences Jeddah at the Corniche. The marks "FOUR SEASONS," "FOUR SEASONS HOTELS AND RESORTS," any combination thereof and the Tree Design are registered trademarks of Four Seasons Hotels Limited in Canada and U.S.A. and of Four Seasons Hotels (Barbados) Ltd. elsewhere.

A MIDAD REAL ESTATE DEVELOPMENT